

MODULE RACKS

Our frames are made of structural aluminum with pre-punched holes for easy assembly. Stainless steel hardware is used throughout and instructions with diagrams are included to facilitate assembly. Adjustable frames can be used for roof, wall or ground mounting. Please specify your brand and type of module.

Single Module Mount

719-001

\$35



Four standoff brackets for roof mounting. Stainless steel nuts, bolts and washers are included. Roof seal included as well. Will fit any module.

Two Module Co-Planer Frame

710-021

\$70

Modules mount on two rails and attach to roof with standoff brackets. Stainless steel nuts, bolts and washers are included.

Two Module Adjustable Frame

710-022 For 50 to 85 watts

\$85

710-023 For 100 to 120 watts

\$119

(features large feet)

Modules mount horizontally on two rails and attach to roof with four small feet. Two pieces of aluminum angle are included. You drill final four holes for your custom angle adjustment.

Four Module - Rails & Hardware

710-040

\$100

Modules mount on two rails using stainless steel hardware.

Four Module Co-Planer Frame

710-041

\$159

Modules mount on two rails using stainless steel hardware. Four large feet are supplied to attach this array to your roof.

Vertical Mount Adjustable Frames

710-042 Two 120W to 185W Panels \$200

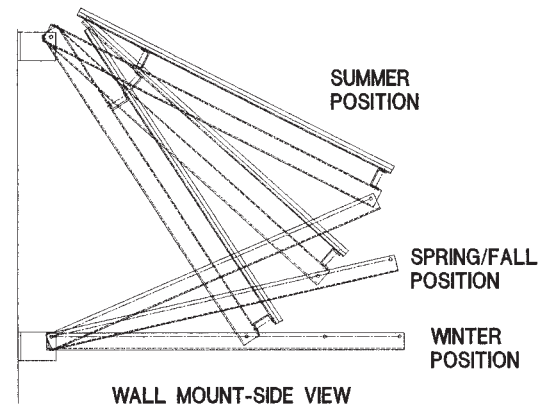
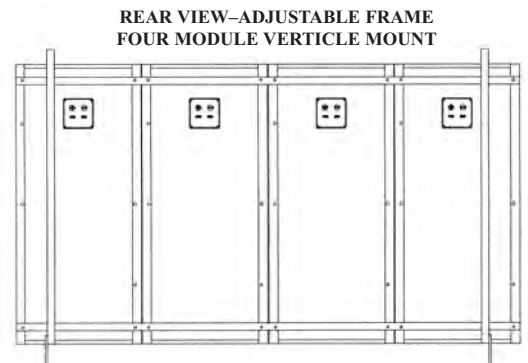
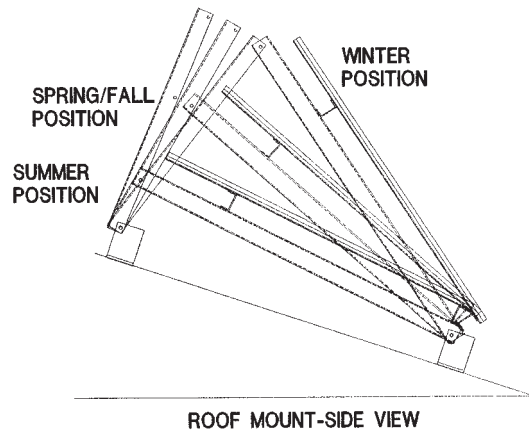
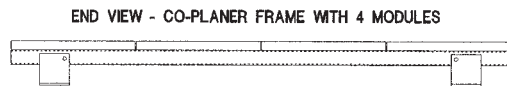
710-044 Four 50W to 110W Panels \$200

Our Vertical Mount Adjustable Frames will fit four modules of less than 100 watts each or two modules over 100 watts each.

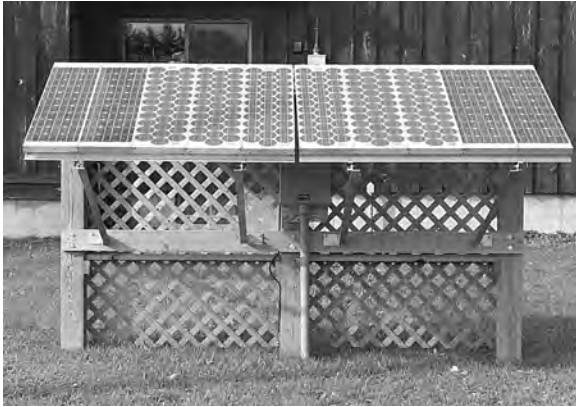
The modules mount on two rails with long dimension up and down to facilitate snow sliding. Two connecting braces tie the two module mounting rails together. Adjustable supports, attached to the connecting braces, angle the array towards the sun. The frame can attach to a roof, a wall or vertical 4x4's in the ground using four large mounting feet. (See drawings for more detail).

All the material needed for attaching the frame to supports is supplied. This includes stainless steel hardware, large mounting feet, hardware to mount the feet to the structure (4"x5/16" stainless steel bolts with toggle wing nuts as well as lag bolts) and a tube of roof sealant.

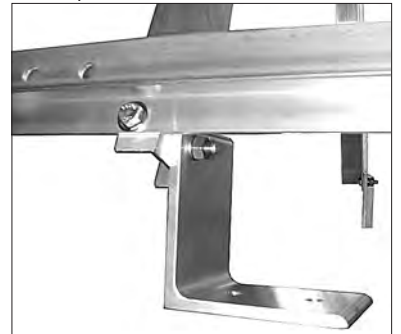
The adjustment supports come with the first hole punched. Included with the frame is a chart for latitude and roof pitch vs seasonal angle. You drill final adjustment holes according to your particular situation.



MODULE RACKS



Example: Four module frame shown with only two of four modules on "flat" roof. Detail views at right.



POLE MOUNTED MODULE RACKS

Zomeworks makes excellent module racks for pole mounting. These racks are made of painted A-513 structural steel. They mount on either the top or side of a pole placed in the ground. The pole could also be mounted to the end of a building. Poles are **NOT** included in the price of the racks. All racks are delivered directly to you from Zomeworks. Delivery time is usually three to four weeks and exact UPS shipping (or freight for the big racks) will be added to the price of the rack.



Zomeworks Top-of-Pole Racks

710-999 Specify Size

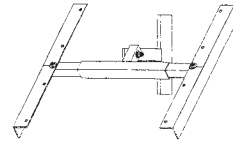
Zomeworks has completely reworked its Top-of-Pole Rack line. The four available models are the FX3, FX4, FX6 and FX Series. All are constructed of type A-513 painted structural steel with mill finish, structural aluminum, mounting rails. The solar modules are fastened to the rails utilizing stainless steel J-Clips with 1/4" stainless steel mounting hardware.

Below the racks are listed by number of modules per rack with a price. Call for part numbers and installation details.

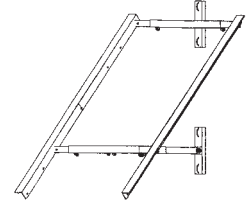
Side-of-Pole Racks

- Seasonally Adjustable
- Constructed of painted A-513 structural steel components with extruded, mill finish, structural aluminum mounting rails
- Utilizes stainless steel J-clip with 1/4" stainless steel mounting hardware

UPST



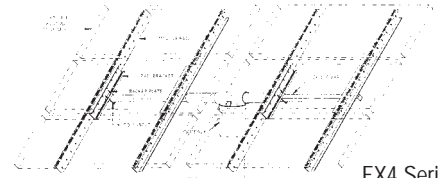
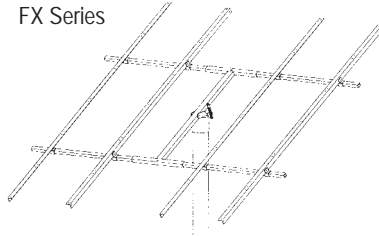
UPSV



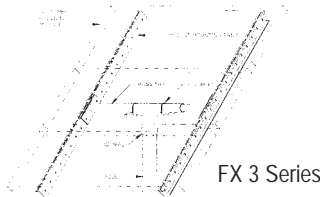
Zomeworks Side of Pole Racks

Model	UPST22M	UPSG32M	UPSG43M	UPSV54M	UPSV65M
Price		Please Call For Quote			
Weight (Lbs)	18	20	23	28	32
BP Solar					
BP350U	1		2		3
BP380U	1		2		3
BP150/160			1		
Shell					
SM50H	1	2	3	4	
SM55	1	2	3	4	
SQ75/80	1		2		3
SM100		1		2	
SunWize					
SW85/90	1		2		3
SW100/115/120			1		

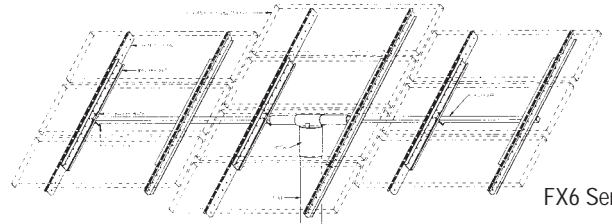
FX Series



FX4 Series



FX 3 Series



FX6 Series

Zomeworks Top of Pole Racks

Listed by price per number of modules. Call for part numbers and installation information. Prices do not include poles.

No. of Modules:	1	2	4	6	8	10	12	14	16
Module Size:									
50W to 65W	\$276	\$288	\$375	\$590	\$663	\$1238	\$1238	\$1238	\$1708
70W to 90W	\$276	\$308	\$403	\$639	\$690	\$1238	\$1333	\$1646	\$1981
100W to 125W	\$276	\$308	\$356	\$572	\$646	\$1238	\$1333	n/a	n/a
160W to 185W	\$288	\$319	\$786	\$1238	\$1333	\$1646	\$2273	n/a	n/a
230W to 240W	\$288	\$476	\$1238	\$1333	\$1646	for 9 \$1981	n/a	n/a	n/a

Zomeworks Track Rack

710-998 Specify Size

Track Rack from Zomeworks is a passive solar tracking system for photovoltaic modules. Since 1980, more than 5100 Track Racks have been installed in different climates on nearly every continent in the world. As dependable as gravity and as reliable as the heat of the sun, more than 99% of Zomeworks trackers are still in operation today.

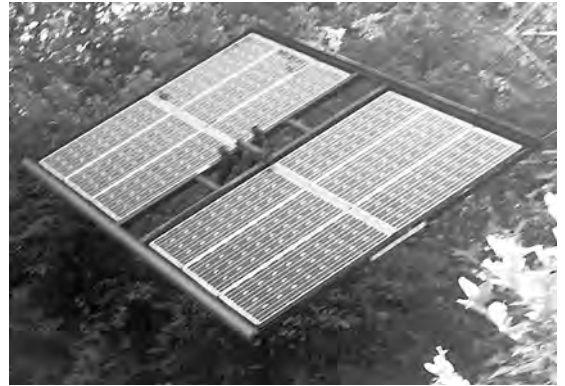
Track Racks increase electrical output of photovoltaic modules by 25% or more compared to modules on fixed mounts. Track Rack passive solar trackers are a highly cost-effective component for domestic and industrial photovoltaic power systems, water pumping systems, cathodic protection systems, and utility applications.

Simplicity and durability of the Track Rack design is unsurpassed. Track Racks are engineered for unmatched reliability and do not rely on drive motors, gears, clutches, high-tolerance pistons, electronics, batteries, or sun sensors. The Track Rack drives its tracking motion with a simple, elegant design that uses the sun's heat to move liquid through a sealed system integrated into its structure. As liquid moves from one side of the rack to the other, gravity causes it to rotate and follow the sun.

Standard Track Racks are constructed of mild steel and finished in satin black urethane paint. Stainless steel module mounting hardware is provided with all Track Rack systems.

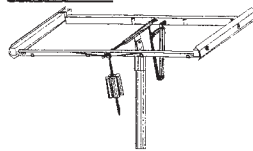
Track Racks are easy to install. They are designed to slip over SCH 40 steel pipe masts set in concrete and are locked into place by tightening one bolt.

Track Racks feature manual north-south axis adjustment settings of 2°, 15°, 30°, and 45° for optimal seasonal performance. Most users adjust their Track Racks twice a year.

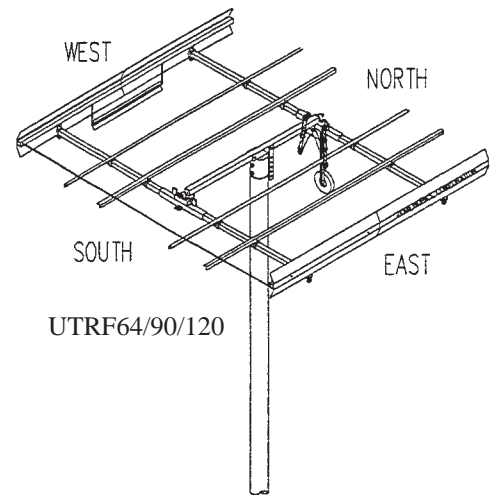
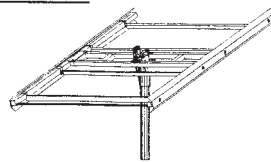


Typical Track Rack for 12 Solar Modules

UTR020



UTR040



UTRF64/90/120

Zomeworks Universal Track Rack Module Specifications (Seven Sizes Fit All)

Track Rack Model	UTR-020	UTRK-040	UTRF-64	UTRF-090	UTRF-120	UTRF-168-2
Price	\$819	\$1,668	\$2,208	\$2,496	\$2,820	\$4,182
*Added Rails:			\$335		\$335	\$335
Module Size:						
50W to 65W	1-2	3-4	6-12	n/a	n/a	n/a
70W to 90W	1-2	3-4	5-6*	6-8	10-12*	14-16
100W to 125W	1-2	3-4	5-6*,7*	8-10	12-14	16-18*
160W to 185W	1	2	3-4	6	8	10-12*
230W to 240W	1	2	3	4-5*	7*-8-9*	10-11*-12*
Size (Inches)	67 x 36	107 x 67	124 x 136	144 x 148	144 x 160	169 x 192
Shipping Weight (Lbs)	95	170	400	490	525	600
Pipe Diameter (Inches) (Sch 40 Steel)	2.5	3	6	6	6	8
Min Pole Height (Inches)	76	84	96	108	120	144
Min Pole Depth (Inches)	38	42	48	54	60	72
Recommended hole diameter, filled with concrete (Inches).	18	18	24	24	24	33